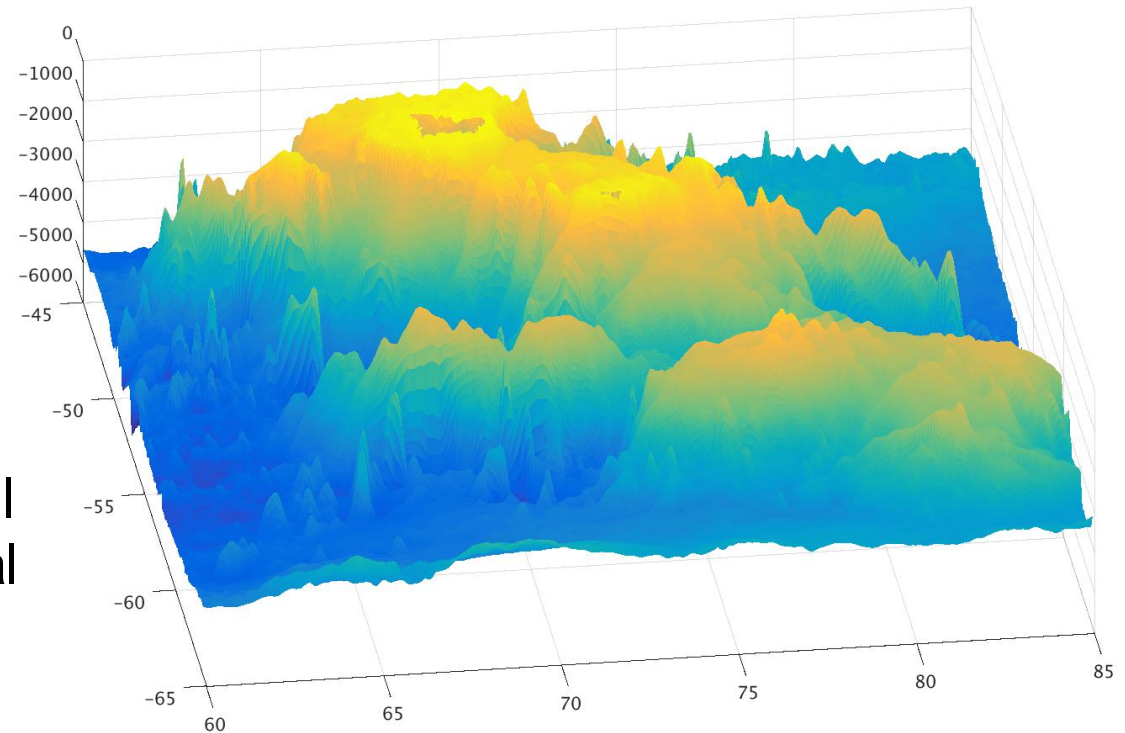


Interactions of oceanic currents with ocean bathymetry

The main goal of this study is to explore interactions between ocean bathymetry and oceanic flows, and to establish the importance of these interactions for the distribution of momentum, energy and oceanic tracers. A student working on this project will design, run and analyze numerical simulations of eddies over the Kerguelen Plateau over a wide range of spatial scales.



Kerguelen Plateau in a numerical model